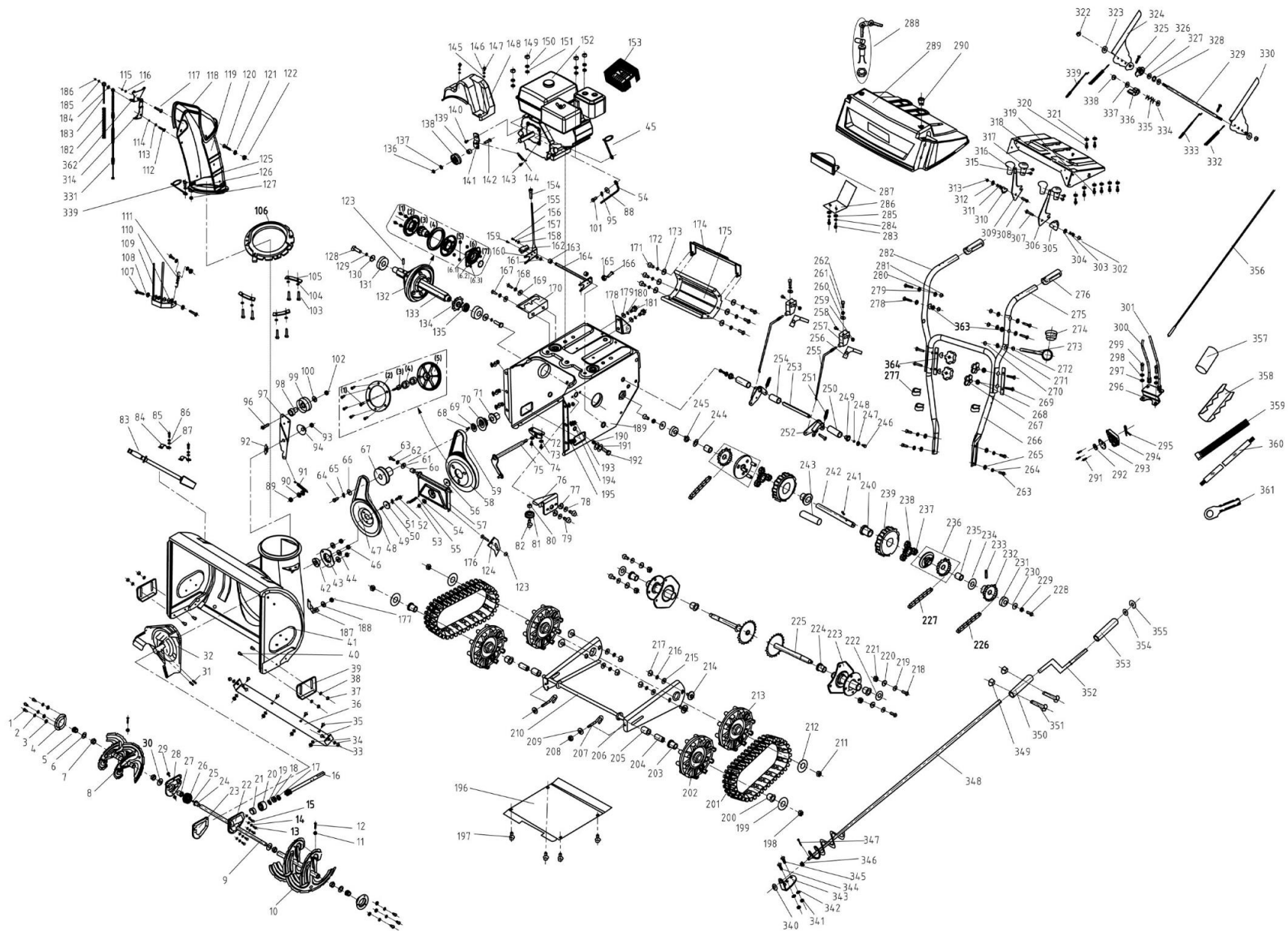


HECHT[®]
made for garden

9665 SE





9665 SE

REFE. NO.	ENGLISH NAME	PART NO.	Q'TY
1	Hex Washer Screw	8SFDD08-16D	6
2	Washer	8WS-08D	6
3	Flat Washer	8WF-08D	6
4	Bearing Housing	8145-765001	2
5	Hex Flange Bearings	8210-765001	2
6	Flat Washer	8202-765002	2
7	Flange Bushing	8334-765001	4
8	Spiral Assembly RH	8231-765001	1
9	Auger Axle	8081-765005	1
10	Spiral Assembly LH	8231-765002	1
11	Nylon Locknut	8NG-08D	2
12	Shear Pin	8086-765001	2
13	Hex Washer Screw	8SFDD06-20D	6
14	Washer	8WS-06D	6
15	Flap Gasket	8WF-06	6
16	Worm Shaft	8085-765001	1
17	Grease Plug	8208-765003	1
18	Ball Thrust Bearing	BK-203510-ST	1
19	Flap Gasket	8202-765003	1
20	Deep Groove Ball Bearing	BC-203709-ST	1
21	Deep Groove Ball Bearing	BC-122808-ST	1
22	LH Housing	8142-765004	1
23	Flat Washer	8208-765002	1
24	Flange Bearing	8334-765008	1
25	Semicircular Key	NO	1
26	Worm Gear	8123-765001	1
27	Flange Bearing	8334-765008	1
28	RL Housing	8142-765005	1
29	Screw	NO	2

REFE. NO.	ENGLISH NAME	PART NO.	Q'TY
30	Reinforced Seal	NO	2
31	Bow Tie Cotter Pin	8PB06-35B	2
32	Impeller Assembly	8403-765001	1
33	Nylon Locknut	8NG-08D	5
34	Flap Gasket	8WF-08D	5
35	Square Neck Bolt	8SLJD08-18D	5
36	Shave Plate	8231-765003	1
37	Nylon Locknut	8NG-08D	4
38	Flat Washer	8WF-08D	4
39	Skid Shoe	8341-765001	2
40	Square Neck Bolt	8SLJD08-18D	4
41	Auger Housing Assembling	8006-765001	1
42	Ball Bearing	BH-204731-ST01	1
43	Keeper	8186-765001	1
44	Flat Washer	8WF-08D	3
45	Nylon Locknut	8343-765007	1
46	Nylon Locknut	8NG-08D	3
47	Auger Pulley	8122-765003	1
48	V-belt	NO	1
49	Flat Key	NO	1
50	Flat Washer	8WF-08D	1
51	Washer	8WS-08D	1
52	Hex Washer Screw	8SFDD08-25D	1
53	Screw	8NG-10D	1
54	Belt Keeper	8343-765006	1
55	Extension Spring	8342-765002	1
56	Flat Washer	8202-765002	4
57	Extension Spring	8292-765006	1
58	Friction Wheel Assembly	NO	1



9665 SE

REFE. NO.	ENGLISH NAME	PART NO.	Q'TY
58—1	Plug Screw	8SEAD06-10D	6
58—2	Bearing Housing	8201-765002	1
58—3	Synchronizing Axle	8086-765003	1
58—4	Ball Bearing	BC-174012-ST	2
58—5	Big Pulley	8122-765004	1
59	Synchronous Belt	NO	1
60	Spacer	8063-765008	1
61	Flat Washer	8WF-06D	1
62	Washer	8WS-06D	1
63	Hex Washer Screw	8SFDD06-16D	1
64	Hex Washer Screw	8SFDD08-35D	1
65	Washer	8WS-08D	1
66	Flat Washer	8WF-08D	1
67	Pulley Half	8122-765002	1
68	Flat Key	NO	1
69	Adjusting Washer	8334-765011	1
70	Synchronous Pulley	8122-765001	1
71	Flange Bearing	8334-765009	1
72	Track Shift Rod Assembly	8186-765002	1
73	Washer	8WS-06D	2
74	Hex Washer Screw	8SFDD06-12D	2
75	Track Shift Rod Assembly	8087-765003	1
76	Front Support Guide Bracket	8292-765011	1
77	Flat Washer	8WF-06D	2
78	Washer	8WS-06D	2
79	Hex Washer Screw	8SFDD06-16D	2
80	Nylon Locknut	8NG-06D	1
81	Cable Roller	8121-765005	1
82	Hex Screw	8206-765008	1

REFE. NO.	ENGLISH NAME	PART NO.	Q'TY
83	Clear-out Tool	8087-765702	1
84	Clear-out Mount	8321-765701	2
85	Hex Washer Screw	8SFDD06-12D	2
86	Washer	8WS-06D	2
87	Flat Washer	8WF-06D	2
88	Flat Washer	8WF-08D	1
89	Nylon Locknut	8NG-08D	1
90	Flat Washer	8WF-10D	2
91	Extension Spring	8342-765001	1
92	Bushing	8206-765001	1
93	Nylon Locknut	8NG-10D	1
94	Saddle Washer	8202-765008	1
95	Washer	8WS-08D	1
96	Hex Washer Screw	8SFDD08-40D	1
97	Auger Idler Arm	8181-765001	1
98	Jacket Tube	8063-765001	1
99	Flat Idler	8121-765001	1
100	Flat Washer	8WF-08D	1
101	Hex Washer Screw	8SFDD08-20D	1
102	Nylon Locknut	8NG-08D	1
103	Tapping Screw	8SJAB40-10B	6
104	Washer	8WS-05D	6
105	Flange Keeper	8186-765004	3
106	Discharge Chute Seat	8301-765003	1
107	Screw	8206-765008	1
108	Flat Washer	8WF-06D	7
109	Safety Jack	8291-765004	1
110	Nylon Locknut	8NG-06D	3
111	Extension Spring	8342-765009	1



9665 SE

REFE. NO.	ENGLISH NAME	PART NO.	Q'TY
112	Hex Washer Screw	8SFDD06-16D	2
113	Flat Washer	8WF-05D	2
114	Nylon Locknut	8NG-05D	1
115	Nylon Locknut	8NG-08D	2
116	Flat Washer	8WF-08D	2
117	Square Neck Screw	8SLJD08-25D	1
118	Upper Chute	8101-765003	1
119	Lower Chute	8101-765003	1
120	Square Neck Screw	8SLJD08-20D	1
121	Flat Washer	8WF-08D	2
122	Nylon Locknut	8NG-08D	1
123	Elastic cylindrical pin	8PB50-32B	1
124	Nylon Locknut	8NG-05D	2
125	Hex Washer Screw	8SFDD06-20D	1
126	Flat Washer	8WF-06D	2
127	Nylon Locknut	8NG-06D	1
128	Hex Washer Screw	8SFDD08-20D	2
129	Washer	8WS-08D	1
130	Flat Washer	8WF-08D	2
131	Ball Bearing	8210-765003	2
132	Friction Ring Assembly	NO	1
132-1	Hex Washer Screw	8SFDD06-16D	6
132-2	Friction Plate	8024-765008	2
132-3	Friction Ring Hub	8334-765010	1
132-4	Friction Ring Rubber	8024-765001	1
132-5	Nylon Locknut	8NG-06D	6
132-6	Friction Ring Bearing Assembly	8331-765002	1
132-7	Moving Plate	8CC-35B	1

REFE. NO.	ENGLISH NAME	PART NO.	Q'TY
133	Hex Track Drive Shaft	8085-765005	1
134	Sprocket	8128-765003	1
135	Spacer	8063-765007	1
136	Nylon Locknut	8NG-08D	1
137	Flat Washer	8WF-08D	1
138	Flat Idler	8121-765001	1
139	Flange Bearing	8063-765001	1
140	Hex Screw	8206-765003	1
141	Drive Cluth Idler Bracket	8181-765003	1
142	Hex Washer Screw	8SFDD08-40D	1
143	Hex Washer Screw	8SFDD08-20D	1
144	Extension Spring	8342-765003	1
145	Flat Washer	8WF-06D	2
146	Washer	8WS-06D	2
147	Hex Washer Screw	8SFDD06-12D	2
148	Belt Cover	8024-765001	1
149	Nylon Locknut	8NG-08D	4
150	Washer	8WS-08D	4
151	Flat Washer	8WF-08D	4
152	Engine	8550-765001	1
153	Heat Shield(without)	8024-765002	1
154	Grip	8002-765001	1
155	Track Lock Handle Assembly	8001-765001	1
156	Hex Washer Screw	8SFDD08-25D	1
157	Washer	8WS-08D	1
158	Flat Washer	8WF-08D	1
159	Hex Washer Screw	8SFDD08-40D	1
160	Flat Washer	8WF-08D	1



9665 SE

REFE. NO.	ENGLISH NAME	PART NO.	Q'TY
161	Nylon Locknut	8NG-08D	1
162	Lift Shaft Drive	8301-765002	1
163	Spacer	8063-765006	2
164	Pivot Rod Assembly	8081-765002	1
165	Nut	8NG-12	1
166	Hex Washer Screw	8SFDD12-40D	1
167	Hex Washer Screw	8SFDD08-18D	2
168	Washer	8WS-08D	2
169	Flat Washer	8WF-08D	2
170	Track Lockout Plate	8292-765002	1
171	Hex Washer Screw	8SFDD08-20D	6
172	Washer	8WS-08D	6
173	Flat Washer	8WF-08D	6
174	Steering Cable Bracket	8020-765001	1
175	Track Housing	8024-765001	1
176	Limiter	8141-765004	1
177	Hex Washer Screw	8SJAD05-16D	2
178	Dirve Cable Bracket	8292-765013	1
179	Flat Washer	8WF-06D	2
180	Washer	8WS-06D	2
181	Hex Washer Screw	8SFDD06-16D	2
182	Compressure Spring	8342-765010	1
183	Guide Bar	8343-765005	1
184	Flat Washer	8WF-08D	1
185	Flat Washer	8WF-06D	1
186	Nylon Locknut	8NG-06D	1
187	Lower Belt Keeper	8141-765003	1
188	Flat Washer	8WF-08D	1

REFE. NO.	ENGLISH NAME	PART NO.	Q'TY
189	Frame Assembling	8144-765001	1
190	Nut	8NG-06	1
191	Flat Washer	8WF-06D	2
192	Hex Washer Screw	8SFDD06-30D	1
193	Nylon Locknut	8NG-08D	6
194	Washer	8WS-08D	6
195	Flat Washer	8WF-08D	6
196	Frame Cover	8183-765001	1
197	Hex Washer Screw	8SFDD06-12D	4
198	Nylon Locknut	8NG-12D	2
199	Gasket	8202-765006	2
200	Plastic Bearing	8210-765001	2
201	Caterpillar	8345-765001	2
202	Front Wheel	8121-765003	2
203	Plastic Bearing	8210-765001	2
204	Spacer 1	8063-765004	2
205	Spacer 2	8063-765005	2
206	Track Side Plate	8187-765002	2
207	Eye Bolt	8343-765001	2
208	Nylon Locknut	8NG-08D	2
209	Flat Washer	8WF-08D	2
210	Idler Axle Assembly	8085-765004	1
211	Nylon Locknut	8NG-12D	2
212	Gasket	8202-765006	2
213	Rear Components	8121-765002	2
214	Screw	8206-765003	4
215	Flat Washer	8WF-08D	4
216	Washer	8WS-08D	4

REFE. NO.	ENGLISH NAME	PART NO.	Q'TY
217	Nylon Locknut	8NG-08D	4
218	Hex Washer Screw	8SFDD08-20D	4
219	Washer	8WS-08D	4
220	Flat Washer	8WF-08D	4
221	Nylon Locknut	8NG-08D	4
222	Flat Washer	8WF-20D	2
223	Track Hub Assembly	8292-765001	2
224	Flange Bearing	8334-765002	4
225	Axle Assembly	8085-765003	2
226	Chain 1	NO	1
227	Chain 2	NO	2
228	Hex Washer Screw	8SFDD06-16D	2
229	Washer	8WS-06D	2
230	Flat Washer	8WF-06D	2
231	Ball Bearing	NO	2
232	Ring Gear	8128-765001	1
233	Elastic Cylindrical Pin	8PB50-32B	1
234	Flat gasket	8WF-14D	1
235	Flange Bearing	8334-765003	2
236	Carrier Assembly	8291-765002	2
237	Gear	8123-765002	6
238	Gear	8123-765003	2
239	Inner teeth rims	8123-765004	2
240	Transmission stem bushing 2	8334-765004	2
241	Flat key	NO	2
242	Shaft	8085-765002	1
243	Drive shaft casing	8063-765002	1
244	Flat Washer	8WF-14D	1

REFE. NO.	ENGLISH NAME	PART NO.	Q'TY
245	Retaining Ring	8CC-14B	1
246	Hex Washer Screw	8SFDD08-20D	2
247	Flat Washer	8WF-08D	2
248	Washer	8WS-08D	2
249	Spacer	8334-765005	2
250	Steering Side Bushing	8063-765003	2
251	Spring	8342-765002	2
252	Dogg Assembly	8301-765001	2
253	Actuator Shaft	8081-765004	1
254	Steering Within	8063-765013	1
255	Steering Farrowed Assembly	8370-765003	2
256	Steering Trigger	8044-765003	2
257	Trigger Seat	8141-765001	2
258	Hex Washer Screw	8SJAD05-20D	2
259	Nylon Locknut	8NG-05D	2
260	Saddle Washer	8WD-06D	2
261	Nut	8NG-06D	2
262	Tapping Screw	8SJAD06-35D	2
263	Hex Washer Screw	8SFDD08-20D	4
264	Washer	8WS-08D	4
265	Flat Washer	8WF-08D	4
266	Lower Handle	8001-765004	1
267	Knob	8313-501002	4
268	Saddle Washer	8WT-08D	4
269	T-screw	8206-765010	4
270	Nylon Locknut	8NG-08D	1
271	Saddle Washer	8WT-08D	2
272	Nut	8NG-08D	1



9665 SE

REFE. NO.	ENGLISH NAME	PART NO.	Q'TY
273	Chute Directional Control Bracket	8087-765005	1
274	Plastic Bushing	8204-765004	1
275	Upper Handle L	8001-765003	1
276	Handle	8063-765701	2
277	Cable Clip	8291-765003	4
278	T-screw	8206-765010	4
279	Flat Washer	8WF-08D	4
280	Washer	8WS-08D	4
281	Nut	8NG-08D	4
282	Upper Handle R	8001-765002	1
283	Tapping Screw	8SJA05-10D	2
284	Washer	8WS-05D	2
285	Flat Washer	8WF-05D	2
286	Lamp Keeper	8186-765003	1
287	Lamp	8418-765001	1
288	Four plug door lock(without)	without	0
289	Operation Panel	8006-765002	1
290	Lamp Switch	8312-765001	1
291	Tapping Screw	8SJAB50-16B	3
292	Spacer	8334-765701	1
293	Shift Cable Lower Guide	8186-765702	1
294	Drive Cable Control Plate	8063-765702	1
295	Cotter Pin	8PA06-30D	1
296	Drive Cable Bracket	8186-765701	1
297	Flat Washer	8WF-08D	2
298	Washer	8WS-08D	2
299	Hex Washer Screw	8SFDD08-20D	2
300	Reverse Cable	8370-765010	1

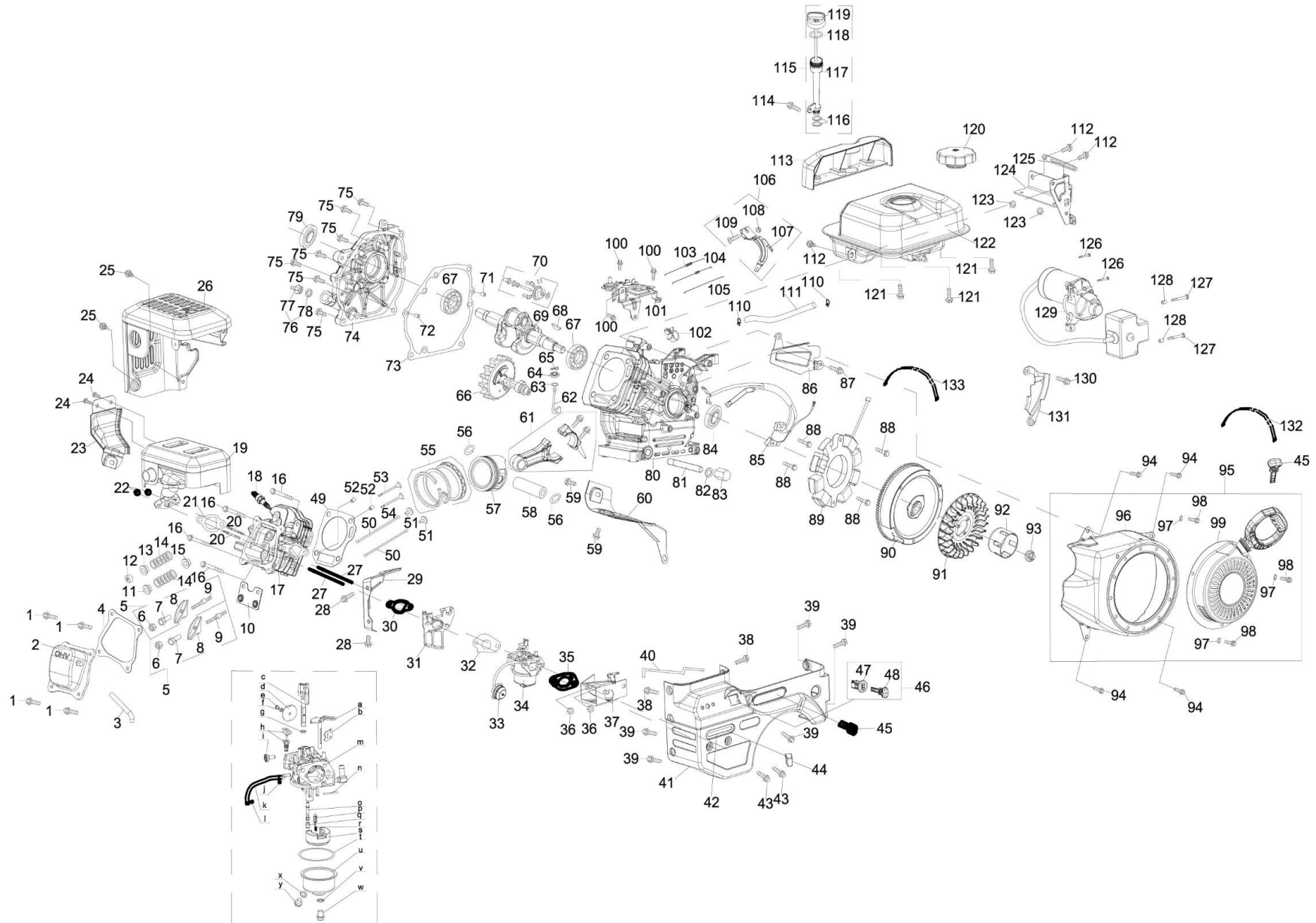
REFE. NO.	ENGLISH NAME	PART NO.	Q'TY
301	Forward Cable	8370-765709	1
302	Nylon Locknut	8NG-08D	1
303	Extension Spring	8342-765007	1
304	Flat Washer	8WF-08D	1
305	Shift Cable Upper Guide	NO	1
306	Shift Control Lever	8044-765006	1
307	Hex Washer Screw	8SFDD08-55D	1
308	Hex Washer Screw	8SFDD08-55D	1
309	Chute Deflector Control Lever	8044-765005	1
310	Upper Shift Cable Guide	NO	1
311	Extension Spring	8342-765007	1
312	Flat Washer	8WF-10D	1
313	Nylon Locknut	8NG-08D	1
314	Lower Cable Bracket	8141-765006	1
315	Plug Screw	8SJAB40-10B	4
316	Shift Knob R	8043-765001	2
317	Shift Knob L	8043-765002	2
318	Handle Panel Assembly w/Tilt	8292-765012	1
319	Plug Screw	8SJAB40-10B	5
320	Plug Screw	8SJAB40-14B	2
321	Flat Washer	8WF-4D	7
322	Nylon Locknut	8NG-08D	1
323	Flat Washer	8WF-08D	2
324	Drive Control	8044-711001	1
325	Screw	8SJAD04-16N	2
326	Handle Lock Cam	8301-711003	1
327	Flat Washer	8WF-102020D	2
328	Washer	8CC-10B	1



9665 SE

REFE. NO.	ENGLISH NAME	PART NO.	Q'TY
329	Cam Rod	8081-711003	1
330	Auger Control	8044-711002	1
331	Chute Deflector Cable	8370-765006	1
332	Extension Spring	8342-765702	2
333	Auger Control Cable	8370-765007	1
334	Flat Washer	8WF-06D	1
335	Spring	8342-711002	1
336	Handle Lock Pawl(without)	8301-711004	1
337	Flat Washer	8WF-06D	1
338	Nylon Locknut	8NG-06D	1
339	Drive Control Cable	8370-765011	1
340	Flat Washer	8WF-08D	1
341	Nylon Locknut	8NG-08D	2
342	Flat Washer	8WF-08D	2
343	Chute Directional Control Bracket	8292-765008	1
344	Square Neck Bolt	8SLJD08-20D	1
345	Hex Washer Screw	8SFDD08-16D	2

REFE. NO.	ENGLISH NAME	PART NO.	Q'TY
346	Bushing	8331-765003	1
347	Cotter Pin	8PA06-30D	1
348	Chute Directional Control	8087-765009	1
349	Nylon Locknut	8NG-05D	2
350	Sleeve	8063-765012	1
351	Screw	8SEAD05-20D	2
352	Z-lever	8087-765008	1
353	Chute Direction Control Handle	8063-765011	1
354	Flat Washer	8WF-10D	2
355	End Ring	8CE-8D	2
356	Wire	8422-765001	1
357	Heat Shrinkable Tube	8G-4-40	9
358	Buckle	NO	6
359	Cable Tie	NO	4
360	Wire	8143-765001	2
361	Wire Connector	NO	1
362	Upper Cable Bracket	8141-765007	1
363	Saddle Washer	8WT-08D	2





9665 SE

NO.	PART NO.	DESCRIPTION	QUANTITY
1	B057890006001670B	BOLT M6x16	4
2	11221-LC90-0100	VALVE COVER	1
3	12104-LG10-0000	BREATHER HOSE	1
4	90229-KB01-0400	VALVE COVER GASKET	1
5	15400-LC90-0001	ROCKER ARM ASSEMBLY	2
6	15414-KB01-0000	NUT PIVOT LOCKING	2
7	15403-KB01-0000	ADJUSTING NUT ,VALVE	2
8	15401-LC90-0001	ROCKER ARM	2
9	15415-KB01-0000	BOLT PIVOT	2
10	15406-KB01-0000	PUSH ROD GUIDE	1
11	15711-KB01-0000	RETAINER IN.VALVE SPRING	1
12	15713-KB01-0000	ADJUSTER EXH VALVE	1
13	15712-KB01-0000	RETAINER EX.VALVE SPRING	1
14	15703-KB01-0000	VALVE SPRING	2
15	1572B-KB03-0000	INTAKE VALVE SEAL	1
16	B0578900080055S0B	BOLT M8x55	4
17	1122B-LG10-0000	CYLINDER HEAD	1
18	81300-KB01-0400	SPARK PLUG/F6RTC	1
19	18000-LG10-0100	MUFFLER ASSEMBLY	1
20	91138-KB03-0300	STUD M8x36	2
21	18066-LC90-0000	EXHAUST PIPE GASKET	1
22	B061700008000000B	NUT M8	2
23	18016-LC90-0000	EXHAUST PIPE SHIELD	1
24	B057890006001070H	BOLT M6x10	2
25	B057890006001270B	BOLT M6x12	2
26	18002-LG10-0000	MUFFLER SHIELD	1
27	91127-JD45-0000	STUD	2
28	B057890006001270B	BOLT M6x12	2
29	61179-LG10-0000	PLATE	1
30	17107-LC90-0000	CARBURETOR INSULATOR GASKET	1

NO.	PART NO.	DESCRIPTION	QUANTITY
31	17112-KB01-0000	CARBURETOR INSULATOR	1
32	17182-KB01-0200	CARBURETOR GASKET	1
33	17140-IC77-0200	PRIMER ASSEMBLY	1
34	17100-LG14-0000	CARBURETOR ASSEMBLY	1
35	17183-LC90-0000	GASKET	1
36	B061770106000060B	NUT M6	2
37	16140-LG10-0000	HEATER BOX	1
38	B057890006001270B	BOLT M6x12	2
39	B057890006001670B	BOLT M6x16	5
40	24635-LG10-0000	CHOKE PUSH ROD	1
41	16155-LG10-0000	AIR CLEANER HOUSING	1
42	12426-LG10-0000		1
43	B057890006001670B	BOLT M6x16	2
44	24633-QE88-0000	CHOKE KNOB	1
45	2461N-LC90-0000	THROTTLE CONTROL KNOB	1
46	72380-LC90-0000	KEY SWITCH	1
47	72381-LC90-0000	KEY SWITCH BASE	1
48	72382-LC90-0000	KEY	2
49	9022B-LC90-0000	GASKET CYLINDER HEAD	1
50	15321-LC90-0000	PUSH ROD	2
51	15002-LC90-0000	TAPPET	2
52	91521-10001600000	DOWEL PIN 10x16	2
53	15702-LC90-0000	EXHAUST VALVE	1
54	15701-KC67-0000	INTAKE VALVE	1
55	1310A-KC67-0100	PISTON RING SET	1
56	13105-KB01-0000	PISTON PIN SNAP RING	2
57	13101-LC90-0000	PISTON	1
58	13102-LC90-0000	PISTON PIN	1
59	B057890006001270B	BOLT M6x12	2
60	19113-LC90-0000	AIR SHIELD	1



9665 SE

NO.	PART NO.	DESCRIPTION	QUANTITY
61	13220-LC90-0000	CONNECTING ROD ASSEMBLY	1
62	24605-LC90-0000	GOVERNOR ARM SHAFT	1
63	90101-10052000190	WASHER 5.2x1.9	1
64	T1101006001100400	GOVERNOR SEAL	1
65	24606-KB01-0000	COTTER PIN	1
66	15100-LC90-0000	CAMSHAFT ASSY.	1
67	92102-00000006205	RADIAL BALL BEARING 6205	2
68	91601-IB84-0000	WOODRUFF KEY	1
69	13230-LC90-C100	CRANKSHAFT ASSEMBLY	1
70	24620-LC90-0000	GOVERNOR GEAR/SHAFT ASSEMBLY	1
71	91521-07001400000	DOWEL PIN 7x14	1
72	91521-09001400000	DOWEL PIN 9x14	1
73	90208-LC90-0100	CRANKCASE COVER GASKET	1
74	12301-LC90-0800	COVER COMP LEFT CRANKCASE	1
75	B057890008003270B	BOLT M8x32	7
76	14311-LC90-0000		1
77	14312-LC90-0000	OIL FILLER PLUG	1
78	90101-10158000250	O-RING 15.8x2.5	1
79	T1108025004125600	OIL SEAL 25x 41.25x6	1
80	12007-LG10-0100	CRANKCASE	1
81	12180-LC90-0100	OIL DRAIN PIPE ASSY.	1
82	91302-91001516000	WASHER 10x 16x1.5	1
83	91103-KB01-0000	OIL DRAIN PLUG	1
84	T1101025004125600	OIL SEAL 25x 41.25x6	1
85	81200-LC90-0800	IGNITION COIL ASSEMBLY	1
86	17184-LG10-0000	AIR FLOW SHIELD	1
87	B057890006001070B	BOLT M6x10	1
88	B057890006002570B	BOLT M6x25	4
89	82108-LC90-0100	COIL ASSY. CHARGE	1

NO.	PART NO.	DESCRIPTION	QUANTITY
90	82150-LC90-0800	FLYWHEEL	1
91	19102-KB01-0000	FAN COOLING	1
92	21520-KB01-0000	PULLEY STARTER	1
93	B061770F14000070B	NUT SPECIAL M14x1.5	1
94	B057890006001270B	BOLT M6x12	4
95	21500-LG10-00006Y	RECOIL STARTER	1
96	21530-LG10-0000	BLOWER HOUSING	1
97	B000950006000000B	GASKET 6	3
98	B166740006001070B	BOLT M6x10	3
99	21510-LG10-0000	RECOIL STARTER	1
100	B057890006001270B	BOLT M6x12	3
101	24610-LG10-0000	PRIMER BRACKET	1
102	10061-KC67-0000		1
103	24602-LG10-0000	GOVERNOR SPRING	1
104	24603-KB01-0000	THROTTLE LINKAGE SPRING	1
105	24604-LG10-0000	THROTTLE LINKAGE	1
106	24640-LG10-0000	GOVERNOR ARM ASSEMBLY	1
107	24607-LG10-0000	GOVERNOR ARM	1
108	B061770106000060B-1	NUT M6	1
109	91121-1060-02120B	GOVERNOR ARM BOLT	1
110	17020-JC79-0200	FUEL HOSE CLAMP	2
111	T2999406300125290	FUEL HOSE	1
112	B057890006001270B	BOLT M6x12	3
113	14304-LG10-0000	DIPSTICK DECORATION COVER	1
114	B057890006001270B	BOLT M6x12	1
115	14301-LC90-0500	DIPSTICK ASSEMBLY	1
116	90101-10155000150	OIL FILL TUBE O-RING	2
117	14313-LC90-0000	OIL FILL TUBE	1
118	90101-10210000277	OIL FILL TUBE O-RING	1
119	14312-LC90-0100	DIPSTICK GUAGE	1



9665 SE

NO.	PART NO.	DESCRIPTION	QUANTITY
120	61120-LC90-0001	FUEL CAP ASSEMBLY	1
121	B057870006001670B	BOLT M6x16	3
122	61100-LG10-00006Y	FUEL TANK ASSEMBLY	1
123	B061770106000060B	NUT M6	2
124	82258-LG10-0000	SWITCH HOUSING MOUNTING BRACKET	1
125	10008-9999-0100	CLIP	1
126	B008180004005500B	BOLT M4x55	2
127	B057870006003270B	BOLT M6x32	2
128	91521-08000800000	DOWEL PIN 8x8	2
129	82230-LG10-0100	STARTUP ELECTROMOTOR	1
130	B057890006001270B	BOLT M6x12	1
131	19112-LC90-0000	BLOWER HOUSING SHIELD	1
132	08216-9999-0900	BELT	2